

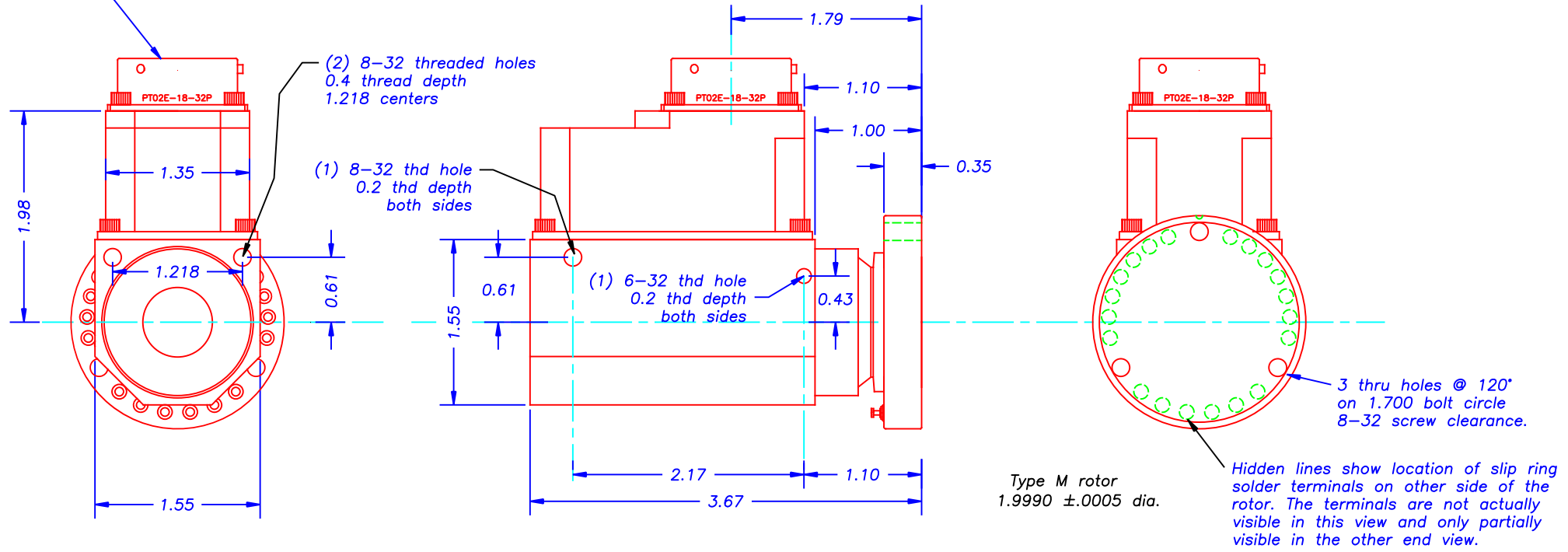
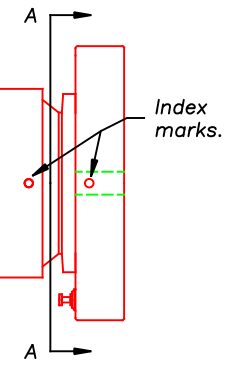
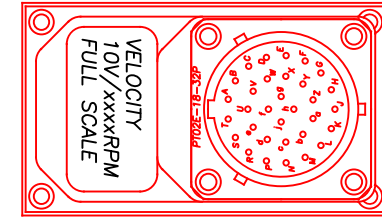
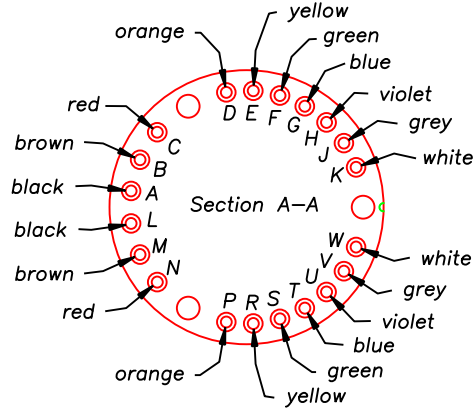
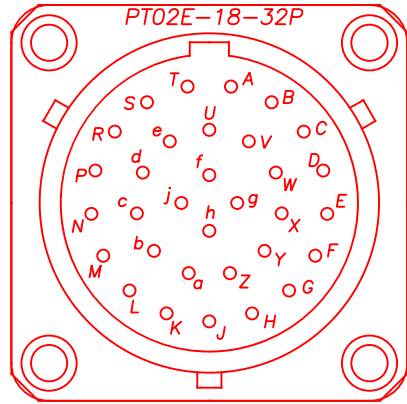
C337044B

For connector dimensions and information about sealing backshells, see pages 4 - 8 of the price list.

DATE	BY	REVISION	LOC.

32 contact stator connector  
Bendix PT02E-18-32P

Contact	Function
A - W	20 slip rings
<u>Encoder</u>	
X	Ground
Y	Option pin 1
Z	Option pin 2
a	Velocity+Position Ground
b	Velocity output
c	Position output
d	+6 to +16VDC input
e	Ground
f	Output A
g	Output B
h	Output I
j	Output A ⊕ B



Weight 13 oz (15 oz with mating connector).  
The encoder & its' electronics requires a +6 to +16Vdc, 400mA power supply.  
Temperature range of the electronics is -40C to +85C.

SR/ERT series  
Model SR20M\_/T\_\_\_/X

20 SLIP RINGS & AN ENCODER WITH BUILT IN ENCODER ELECTRONICS  
IN A WEATHERPROOF HOUSING.

Weight 15oz. (17 oz. with mating connector).

**MICHIGAN SCIENTIFIC CORPORATION**  
08500 ANCE ROAD  
CHARLEVOIX, MI 49720  
PHONE: (231)547-5511 FAX: (231)547-7070

<b>TOLERANCES</b> .xxxx ±.0005 .xxx ±.005 .xx ±.01 ANGLES ±°-'-" SURFACE FINISH ---RMS	<b>DESIGNED BY:</b> KDL	<b>DATE:</b> 2-3-00	<b>SCALE:</b> 1:1
<b>DRAWN BY:</b> KDL	<b>TITLE:</b> OUTLINE DRAWING		
<b>CHECKED BY:</b>	<b>SHT OF SHTS:</b>	<b>SIZE:</b>	<b>BH</b>
<b>DRAWING NO.:</b> C337044B	<b>MATERIAL:</b> 20 SLIP RINGS & ENCODER & ENCODER ELECTRONICS		