



Safety ensured by Pinch Force Measurement

DriveTest GmbH develops and produces test-systems for the world-wide use in the automotive and railway industry. As one of the pioneering companies in the field of pinch force measurement **DriveTest** offers a broad range of different systems for a variety of applications.

Every system supports the control of applicable standards. The service comprises the consultation, maintenance and calibration of the measuring devices. Major customers include car manufacturers all over the world.

The FM 207 is an electronic force measuring system for power driven car devices such as windows, tailgates, seats and sunroofs.

Due to its wide measuring range it is appropriate to measure the maximum force (Überschusskraft) provided by an e-drive with deactivated anti pinch function under defined conditions (10 N/mm, max 500 N).

The force initiation is designed universally. Adaptions for special applications are easily possible.

The FM207 is typically used in development, testing and production fields in the automotive industry.

Applicable standards

- directive 2000/4/EG or userdefined

Various Applications

- windows, liftgates, sunroofs, seats

Standard deflection rate

- 10 N/mm

Wide measuring range

- 500 N max

High precision

- frictionless guides and platform load cell.

Ease of Use

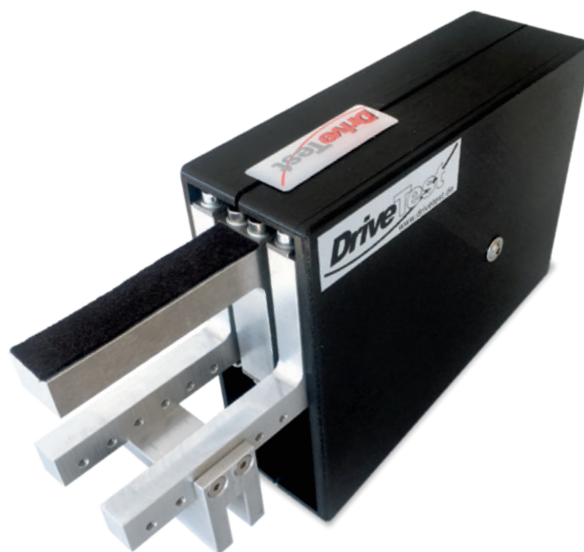
- single-button operation

Professional software

- PinchPilot offers complete functionality

Complete delivery

- high-quality transportation case



Sensor FM 207

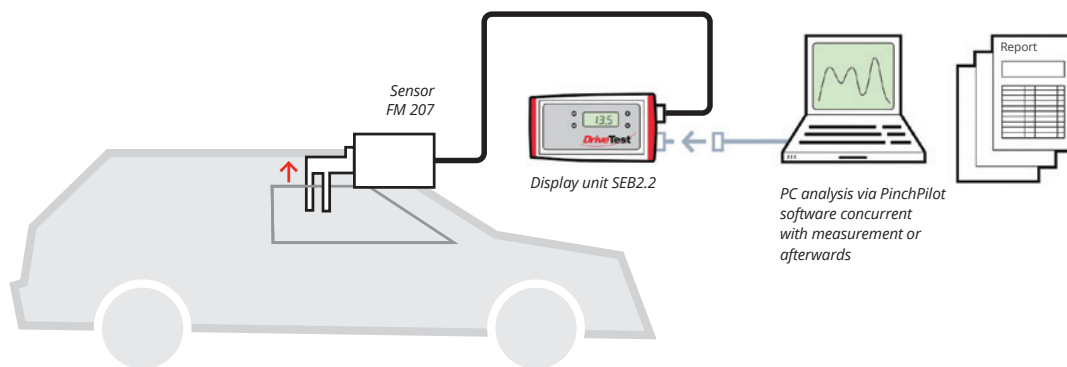
- Force initiation: Fork (static): 50 x 15 x 80 mm
Bar (movable): 20 x 15 x 80 mm
- Range: 0-500 N
- Accuracy: +/- 3 N (0-100 N)
or +/- 3 % (> 100 N)
- Deflection rate: 10 N/mm +/- 10 %
- max. gap (relaxed): 70 mm
- min. gap (limit stop): 15 mm
- Force sensor: strain gauge bridge
- Size: ca. 250 x 60 x 160 mm
- Weight: ca. 1.000 g
- Temperatur range: 0-40 °C
- Extended temperature range: -40 ... 85 °C
(not for permanent op.)

Display Unit SEB2.2

- Data logger (display unit SEB2.2 with LCD-Display and Status LEDs, button and USB interface USB-Schnittstelle)
- Optional PC-controlled measuring
- Lithium-Polymer battery 3,7V / 700 mAh
- Onboard realtime clock
- Storage for 100 measurements
- Sensor and PC-interface (USB)
- Display of peak- and effective force
- Pass/fail evaluation

PC-Software PinchPilot

- Multi-Language (DE, EN, IT, FR, ES)
- Grafic display of force
- Calculation of relevant parameters
- Evaluation with respect to different guidelines/standards
- Printed reports
- Data export (Excel, CSV, PDF)



Delivery:

FM207-AU-SY-10-500 | Order No.: 69396



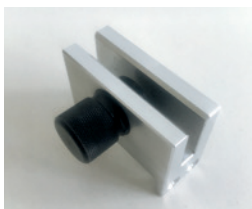
FM 207 Sensor



SEB2.2 Display Unit



PC-Software PinchPilot,
USB-Cable



Mounting Adaptor for
Windows



Transport Case

Options:



SEB2.2 Analog-
Interface 0509
Order-No.: 69274