

Press Force Load Cells are strain gauge based transducers for press-force monitoring.

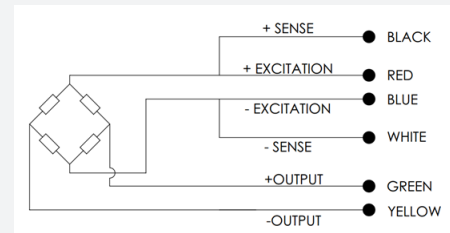
This type offers capacities up to 100 kN and 20 klbF with compensated temperature performances. Cable is contained within a stainless steel spring for strain relief purposes for additional protection.



WIRING

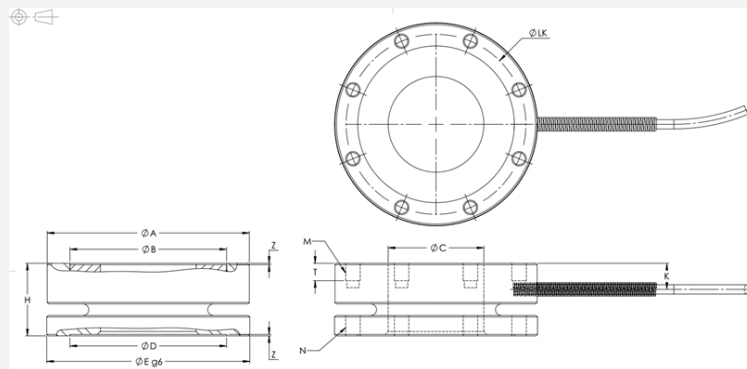
- Sensor is provided with 3m, 28 AWG wire (Other lengths are available on request). Voltage, current loop or digital output versions are also available on request.

CAPACITY	DEFLECTION (NOM.) (MM) [IN]
2kN	0.02 [.001]
5kN	0.03 [.001]
10kN	0.03 [.001]
20kN	0.05 [.002]
50kN	0.10 [.004]
100kN	0.15 [.006]



PRESS FORCE LOAD CELL

DIMENSIONS



Metric version (mm)

NOMINAL FORCE (KN)	A	B	C	D	E	H	K	Z	M	T	LK	N
2 / 5 / 10 / 20	69.7	54	33	54	70	25	9	0.5	M5-0.8, 8x45°	6	62	M5-0.8, 8x45°
50 / 100	111.5	97	70	97	112	35	13	1.1	M6-1, 8x45°	10	104	M6-1, 8x45°

Pound version (inch)

NOMINAL FORCE (KLBF)	A	B	C	D	E	H	K	Z	M	T	LK	N
0.5 / 1 / 2 / 5	2.74	2.13	1.30	2.13	2.756	0.98	0.35	0.02	#10-24, 8x45°	0.24	2.44	#10-24, 8x45°
10 / 20	4.39	3.82	2.76	3.82	4.409	1.38	0.51	0.04	#12-24, 8x45°	0.39	4.09	#12-24, 8x45°

PRESS FORCE LOAD CELL

SPECIFICATION

PARAMETER	RANGE	NOTES
Capacity (kN) Capacity (klbf)	2,5,10, 20, 50 and 100 0.5, 1, 2, 5, 10 and 20	
Safe Overload	200% FS	No influence on measurement
Ultimate Load	>300% FS	
Sensitivity (mV/V)	1 +/- 20%	Voltage, current loop or digital output
Non-Linearity	+/- 0.25% FS	+/- 0.5% FS max.
Hysteresis	+/- 0.25% FS	+/- 0.5% FS max.
Repeatability	+/- 0.1% FS max.	
No Load Offset	+/- 2% RO	
Zero Temp. Coefficient	0.02% RO/°C	
Sensitivity Temp. Coefficient	0.02% RO/°C	
Compensated Temp. Range	-15°C to 70°C	
Operating Temp. Range	-40°C to 70°C	
Bridge Resistance (Ohm)	700	
Excitation	5V, 10V	
IP Rating	60	
Material	Stainless steel	